

## Modular Stencil Storage System



### ATERON modular– The Smart Storage System

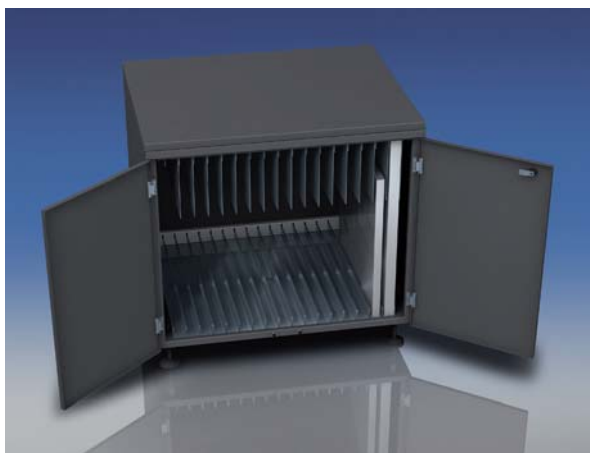
The S10 modular is an easy to upgrade stencil storage system, specifically focused on flexibility. For a proper storage of stencils, the S10 modular is equipped with two swing doors and a twist locker. The inner design of the S10 modular can individually be configured and can accommodate frameless as well as framed stencils of all common sizes from 20 up to 29 inch (740 mm). The individual modules could be mounted on top of each other, in order to ensure all stencils always fitting into the same system. A stainless steel working plate on top of the S10 modular enables an easy and fast commissioning and handling of stencils before and after their use.

#### The basic module consists of:

- + High-valued metal housing, powder coated RAL 7015 (slate grey)
- + Two swing doors for easy access
- + Twist locker

#### Options

- + Stencil rails to accommodate framed stencils from 20 up to 29 inch
- + Stencil bar left and/or right, for accommodation of frameless stencils
- + Door locker (lockable with key)
- + Further options on request



#### Standard Dimensions:

Length x width x height:  
Weight:

Max. Gross Weight

1.005 x 804 x 850 mm  
ca. 70 kg (Basic Module)  
ca. 150 kg (All Options)  
max. 200 kg

#### Prices:

Will be calculated  
according to size and  
options